



[english](#) | [français](#) | [deutsch](#)

MY KDS ACCOUNT

Username or e-mail address: *

Password: *

[>> Login](#) >> [Register](#)

[HOME](#) [COMPANY](#) [SOLUTIONS](#) [NEWS & EVENTS](#) [PARTNERS](#) [CONTACTS](#)

Search [>>](#)

[Home](#) » [KDS partner of the Sagax Greenland Double Top expedition](#)

KDS partner of the Sagax Greenland Double Top expedition

Kick off June 18th , 2007

An expedition aiming to list and put into light the problems plants and animals face in Greenland because of global warming.

Leader: [Luc Hardy](#) Venture capitalist and adventurer.



Team: Made of members of the [Group for Ecological Arctic Research "GREA"](#).

A one month expedition



Goal

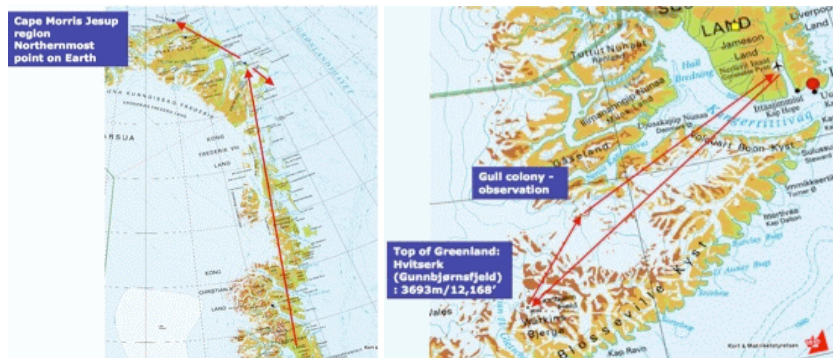
[The localization, the cartography and the counting of the most important colonies of Ivory gull of the Greenland, called nunataks.](#)

Mount Gunnbjorn, aka the Top of Greenland, at 3,693 meters (12,168 feet), where they will examine melted ice and see if lichens are forming due to higher temperatures;

Camp Icefield, 100km north of Mount Gunnbjørn, where the team will locate, count and survey ivory gull colonies. By equipping the gulls with tiny solar-powered transmitters, satellite tracking will determine if they are going further north due to increasing temperatures;

Kap Morris Jesup/Oodaaq Qeqertaa, the northernmost point of land in the world, where the team will try to provide the precise GPS coordinates for the northernmost dry bit of land in the arctic;

Greenland - Northeast islands, where the team will survey the local polar bear population, and attempt to locate bowhead whale and use crossbows to collect biopsies.



The return is planned on Wednesday, July 18th 2007.

The double top Greenland 2007 expedition will strictly limit its impact on the local ecosystem. The team will not use SUVs or ground construction and the whole equipment will use solar energy. The small amount of waste created (paper, packaging...) will be burnt or brought back to Iceland to be recycled.



The expedition is made in partnership with [Green Cross International](#) (GCI). Founded and chaired by Mikhail Gorbachev, Green Cross International (GCI) is one of the few organizations focusing its attention on the crucial nexus between security, poverty, and the environment.

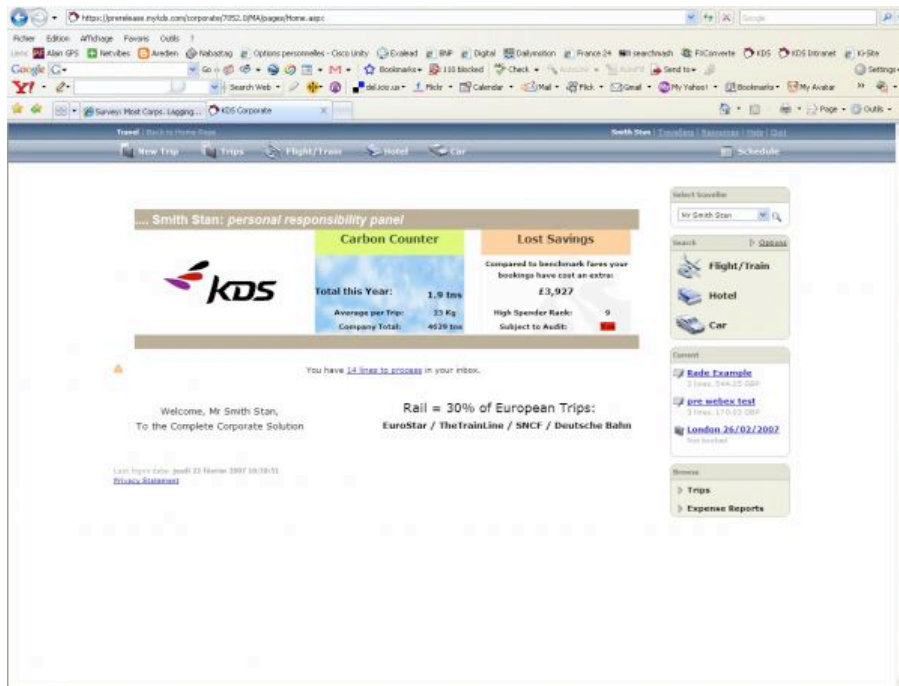
KDS commits to join the fight against global warming

Despite many companies claiming to be committed to environmental protection, a recent survey conducted by KDS and ACTE on behaviours in the business travel sector shows that very few of those commitments are actually put into action in the daily management of corporate business travel. In fact only 32% of the interviewed companies say they have implemented a sustainable development policy for travel and only 20% say they are influenced by a travel policy which supports travel providers which have lower CO2 emissions or who respect a certain environmental chart.

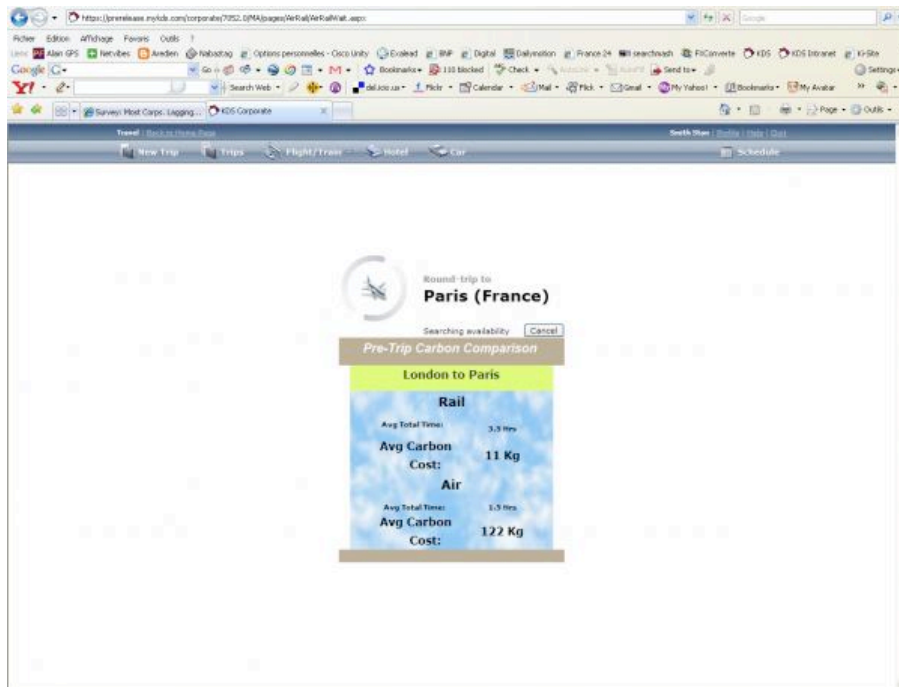
The low application level of those policies in corporations can partly be explained by the fact that they are lacking the right tools to do it.

KDS wanted to fill the gap by presenting a prototype of an “environmentally responsible” travel management solution “at the business travel show last February in London.

This solution integrates a “carbon calculator” provided by The Carbon Neutral Company. Currently being developed, it will be available in the third quarter of 2007.



Home page showing the carbon counter of the total for the year and the cost.



Amount and cost of CO2 for a trip London to Paris by rail.

[Click here for the latest news on the expedition.](#)



Related Links



[About global warming](#)

Live from the blog



Team members will update this blog regularly with details about the preparation of the expedition. Beginning July 1 you will find a daily update (weather permitting) of our adventures, research, scientific studies sightings and reflections! This blog will be your link to the preparation, feel free to contribute to it!

URL: <http://web.mac.com/luchardy/iWeb/Greenland%202007/Blog/Blog.html>

Updated: 49 min 39 sec ago

[The Encyclopedia of Life](#)

Sun, 13/05/2007 - 18:18

What a fantastic project. I have been following it for a while and it is making lots of progress: As per the New York Times (May 9, 2007): "The world's scientists plan to compile everything they know"

[A worthwhile Award!](#)

Wed, 09/05/2007 - 22:56

I recently had the privilege to award the "[Trophée des Achats](#)" (Sustainable Development category), together with Nadine Talmont of [RHODIA](#), to the French subsidiary of BancTec, on April 23, at fancy

[A worthwhile Award!](#)

Wed, 09/05/2007 - 22:56

I recently had the privilege to award the "[Trophée des Achats](#)" (Sustainable Development category),

[He is back!](#)

Fri, 04/05/2007 - 22:48

Ben is back from the North Pole region where he assisted another expedition. As you know Ben will be with us in July in Greenland and will be our lead guide, he is also a professional photographer.

[Kick-Off!](#)

Mon, 09/04/2007 - 21:00

As you can see, we have met a milestone. The website is on line and there are only 48 days before we set foot in Greenland. Today's weather ranges from -5 in Pituffik on the north western coast to 34

Site Map

Home

Company

- Mission
- Management
- Advisory Board
- KDS Board
- Customers
- Success Stories
- Jobs

Solutions

- KDS Corporate
- KDS Portal
- KDS Expense

News & Events

- News
- Events
- Press Releases
- Clippings
- Newsletters
- Press Center

Partners

- Technology
- TMC

Contacts

Tag Cloud

[acte](#) [boston](#) [corporate](#) [end](#)

[to](#) [end](#) [expense](#) [kds](#)

[microsoft](#) [sarbanes-oxley](#) [scientific](#)

[survey](#) [travel](#) [webcast](#)

All material on this website is copyright © 2006 2007 KDS.com

[Credits](#)